

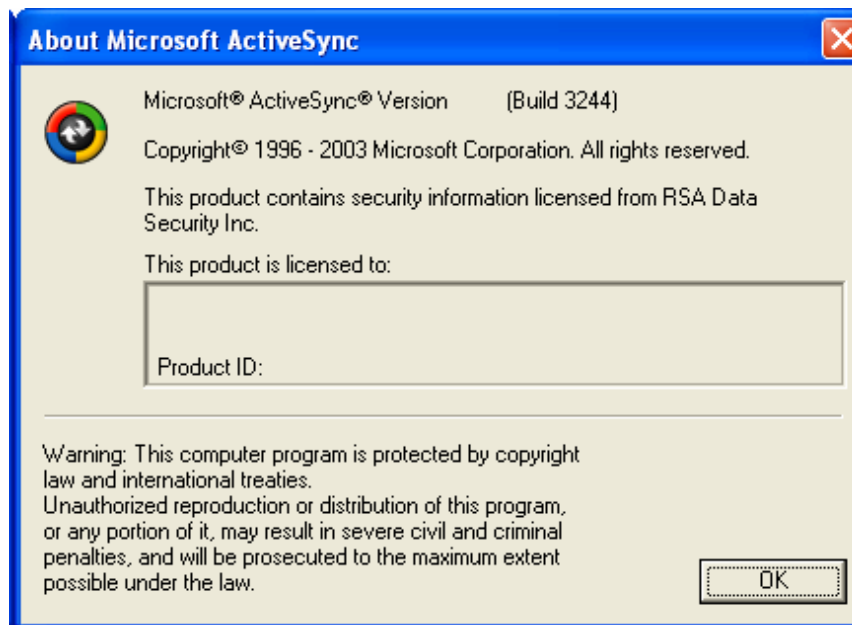
MAT – ActiveSync Setup

MAT Terminal ActiveSync Setup for the MAT USB or Serial

When connected to a PC, the MAT should be automatically recognized as a USB or Serial device and the user should be prompted to install the new files.

The procedure for using ActiveSync with the MAT is as follows:

1. On the PC, make sure the USB or Serial cable is **NOT** connected.
2. Power up the PC.
3. Install ActiveSync and start it up. Be sure it is the latest version by going to Help->About



If ActiveSync is not the latest version, click to the following site to obtain it:

<http://www.microsoft.com/downloads/>

Once at the Download page, click on the Mobile Devices category and then on the latest version of ActiveSync.

Corporate Headquarters
PO Box 1209
Mt. Gilead, NC 27306



International Sales Office
304 E. Strawbridge Ave.
Melbourne, FL 32901

MAT – ActiveSync Setup

Go to File->Connection settings and make sure the USB or Serial box is checked.

4. Download the CE USB- Serial Host Driver from the MAT Product Support Page.

<http://www.compsee.com/Products/MAT/MAT-ProductSupport.htm>

5. Copy the files in the ZIP file into a temporary folder on the PC's hard drive.
6. Power up the MAT and wait for Windows CE to start. Make sure the USB/Serial cable is **NOT** connected during boot.
7. Plug in the USB/Serial cable into the PC.
NOTE: See Below for Serial set-up instructions.

8. Make sure the handheld is **NOT** in suspend mode and plug in the USB/Serial cable into the sled or dock. Put unit into dock if necessary.

9. The PC should respond that it has found new hardware and it will prompt you to install software.

10. Choose the advanced option so you can browse to the temporary folder where you installed the files from the downloaded ZIP file.

11. Select the **wceusbsh.inf** file.

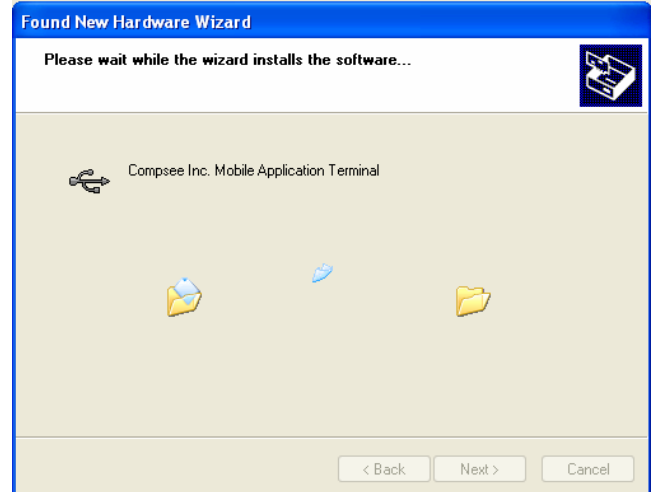
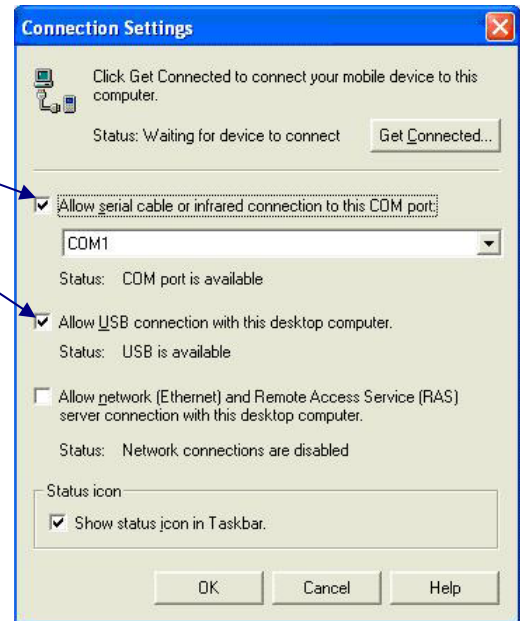
12. The PC should respond with:

13. Follow the on-screen instructions.

14. Choose Advanced Options to be able to browse the temporary folder where you installed the files from the downloaded Zip file. Select the MAT driver weeusbh.ini file. Use remaining defaults to complete the ActiveSync installation.

15. To insure a proper connection, you should be able to explore the MAT device using the Explore function of ActiveSync. Open the ActiveSync Icon in your Taskbar to use this function.

16. You can now delete the files from the temporary folder.



Once these steps are followed the first time, the PC will automatically recognize the MAT each time it is connected to the PC. By using the ActiveSync Explore Tool and your PC Explore Tool, you can Drag and Drop files between your PC and the MAT Terminal.

Corporate Headquarters
PO Box 1209
Mt. Gilead, NC 27306



International Sales Office
304 E. Strawbridge Ave.
Melbourne, FL 32901

MAT – ActiveSync Setup

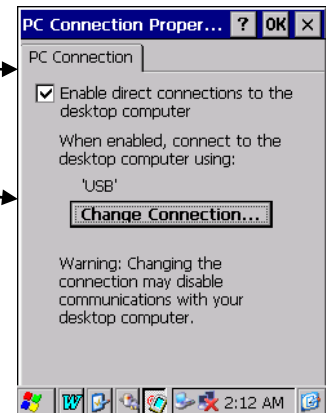
MAT Serial Connection Instructions

- Open the “Control Panel” on the MAT
- Open Network and Dial-Up connection
Verify that the Icon for “Desktop @ “Baud Rate”” exists.
If absent, you must set one:

Serial Cable on	Com 1
Select Baud Rate	115200
Data Bits	8
Parity	N
Stop Bits	1
Flow Control	Hardware

- Open PC Connection Properties
To enable communications with a desktop, the PC Connection box must be checked

Select Change Connection
Select the Serial option to be used
(For example: “Desktop @ 19200”)
Tap OK for Change Connection
Tap OK for PC Connection...



- Connect the Serial Cable(s) to the MAT via the End Cap or the Dock

MAT Dock = 0212019
MAT End Cap = 0212019 and 0212018 (Adapter Cable)

Notes:

If the MAT Modem End Cap (P/N 200EC2) is used, the default position is Modem, be sure to set the Switch to the Serial Position.

If a Dock is used, securely place the MAT in the Dock

- On the MAT
Select: Start
Select: Run
Enter: REPLLOG
Tap: OK
- ActiveSync will connect to the MAT via RS232 Serial
Note: If the link is broken it will only be established with the MAT Connected and running REPLLOG as described above...

Corporate Headquarters
PO Box 1209
Mt. Gilead, NC 27306



International Sales Office
304 E. Strawbridge Ave.
Melbourne, FL 32901